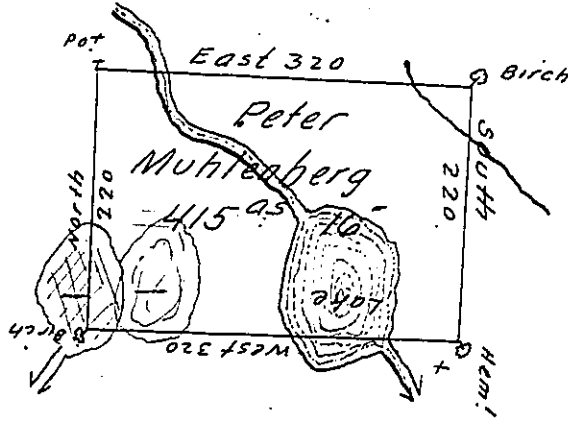


Charles C. White

C177-21  
Benjn A. Hattenhouse



Moses Hobson

C-79-277

Wm Armstrong

28236

D-319

In Pursuance of a Warrant Dated January 3<sup>d</sup> 1793. Surveyed  
 to Peter Muhlenberg Oct<sup>r</sup> 11<sup>th</sup> 1794. The above Described Tract  
 of land Situate <sup>on</sup> a branch of Oxbow Creek in the County of Luzerne  
 Containing Four Hundred & fifteen Acres & Sixteen perches & all of  
 6 p. Ct.

Da! Brodhead Esq<sup>r</sup>  
 Surveyor Gen<sup>l</sup>

Anty Crothers D.S.

IN TESTIMONY that the above is a copy of the original remaining on file in  
 the Department of Internal Affairs of Pennsylvania, made  
 conformably to an Act of Assembly approved the 16th day of  
 February, 1833, I have hereunto set my Hand and caused  
 the Seal of said Department to be affixed at Harrisburg,  
 this tenth day of November 1905.

*Geo R. Brown*  
 Secretary of Internal Affairs.